

The Power of Partnership

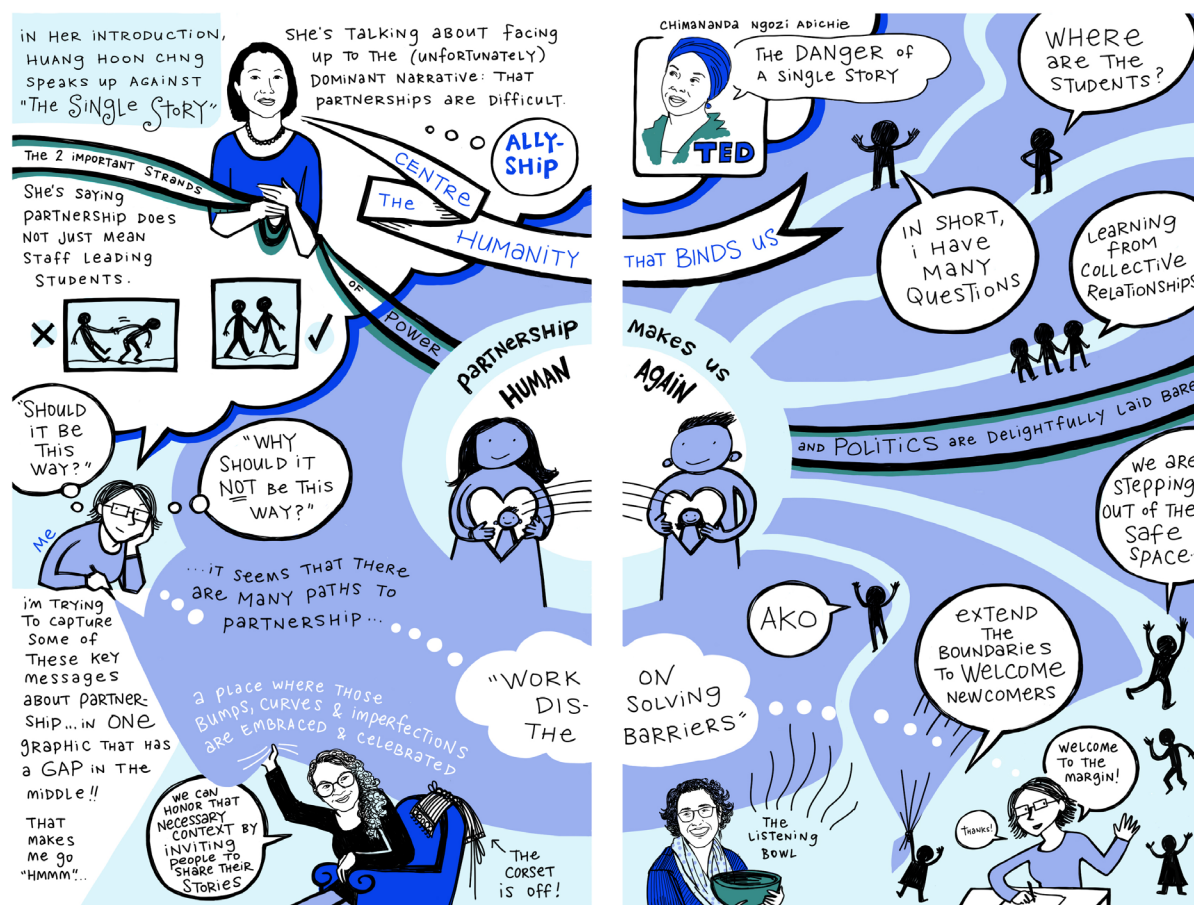
Students, Staff, and Faculty Revolutionizing Higher Education

Edited by Lucy Mercer-Mapstone and Sophia Abbot

REFLECTION QUESTIONS FOR READERS

SECTION ONE: POWER AND POLITICS

1. How might systemic societal power in terms of privilege and oppression (for example, racism, sexism, heteronormativity) play out in or impact your partnership practices?
2. What unlearning might you need to do to be a more effective partner?
3. How could partnership in higher education contribute to the power and politics of society beyond our institutions?



SECTION TWO: INTERSECTIONS

1. Areas of intersections—borderlands or in-between places—can be areas of rich growth. Why might these be such a reoccurring theme for student-staff partnership?
2. What intersections in your partnership thinking and practice could or do foster growth?
3. We often consider how partnership intersects with aspects within and of higher education. How and where might your partnership thinking and practice intersect with people, places, and spaces outside of higher education?



SECTION THREE: GROWING PARTNERSHIP

1. Authors in this section drew on a lot of metaphors to explore partnership. What metaphors could be used to explore your partnership thinking and practice? How do different metaphors shed new light on your understanding of partnership?
2. Jenny Marie, in the introduction to this section, describes author's partnerships as many "winding paths and tempestuous journeys." If you were to illustrate or describe your partnership thinking or practice as a journey, what story would you tell?
3. What different facets of growth have you experienced in and through your partnership thinking and practice? How have you grown (in) partnership(s)? What fertilizer has been critical to that growth? Which offshoots of growth have been most surprising?

